



PANORAMA

EMBRACE
THE BLISSFUL
HIGH LIFE

A Project Of:

KR | INFRA
HEIGHTS

WAKE UP TO A PANORAMIC GRANDEUR OF THE MOUNTAINS EVERY DAY

The breathtaking views of the mountain be it sunny, rainy or misty are always fascinating, blissful and serene. It's the search of pure serenity of these views that often takes you to the hill station tours where you sync with your inner peace.

But ever imagined the bliss that you experience from the resort balcony could actually be a part of your everyday life?

We are just making it happen!



A PLACE FOR YOU TO FIND YOUR SOUL SPACE

Come home to Panorama!

Envisioned by K R Infra Heights, Panorama is Uttarakhand Kumaoun region's first ever ultra-luxury high-rise residential apartment complex that's located near Kathgodam, Nainital Road, Haldwani.

Right in the foothills of Kumaon's Fatehpur range, the picturesque setting of Panorama is simply the icing on the cake!

Life at Panorama is anything but ordinary. Offering every element of an upscale living, it's our promise of a high-life!

Towering 8-storey high, Panorama consists of only a limited 56 units in lavishly designed 3 and 4 BHK configurations.

Unique in every aspect such as the location, planning, design, features, facilities etc., Panorama is undoubtedly Haldwani's pride and a landmark in the offing.

It's an exclusive space of repose where you get to rediscover your inner self every day and lead a blissful life.



PANORAMA





PANORAMA

AN EXPRESSION OF PRISTINE BEAUTY

A meticulously planned architecture allows every home at Panorama getting 270° luscious & evergreen views of the western Fatehpur mountain range as well as the Chhakhata range that's on the north-eastern side .

It's the place where panoramic views greet you and you get to experience that 'resort feeling' every day!

The pristine beauty of the surroundings, freshness of air and ample natural light also cleanse your soul & senses.



Key Utility Facilities for your safety and conveniences

- 24/7 Security with CCTV Surveillance
- Home Automation with Video Door Phone
- Dedicated Space for 5 nos EV cars for fast charging
- Biometric Safety Lock
- Stabilized Electrical Connection
- Dedicated Car Washing Space
- Parking as per Area
- U.G.T Water Storage Tank
- Dedicated Heat Pump for each Flat for Hot Water
- Dedicated VRV System for Flats
- Clean and Green Environment
- DG Backup of 2KVA
- 3 Lifts including 1 Service Lift
- 24 x 7 Filtered Water Supply
- Garbage Collection Bins on each Floor
- Semi-covered Space for Cloth Washing and Drying
- Smoke and Fire Alarm System
- Android / iOS Controlled Automated Boom Barrier

FINE LIVING CRAFTED FOR A BETTER LIFE

Panorama's RCC structure is designed, following all the earthquake resistant norms, by an IIT Kanpur alumni consultant. The homes are specifically designed to cater to the needs and lifestyle of modern Indian families. With spacious living areas, superior ventilation, and high-quality finishes, Panorama ensures that luxury is never compromised.



Interior images shown here are an artist's impression only. Furniture, fixtures, upholstery, etc shown are not part of the offering.

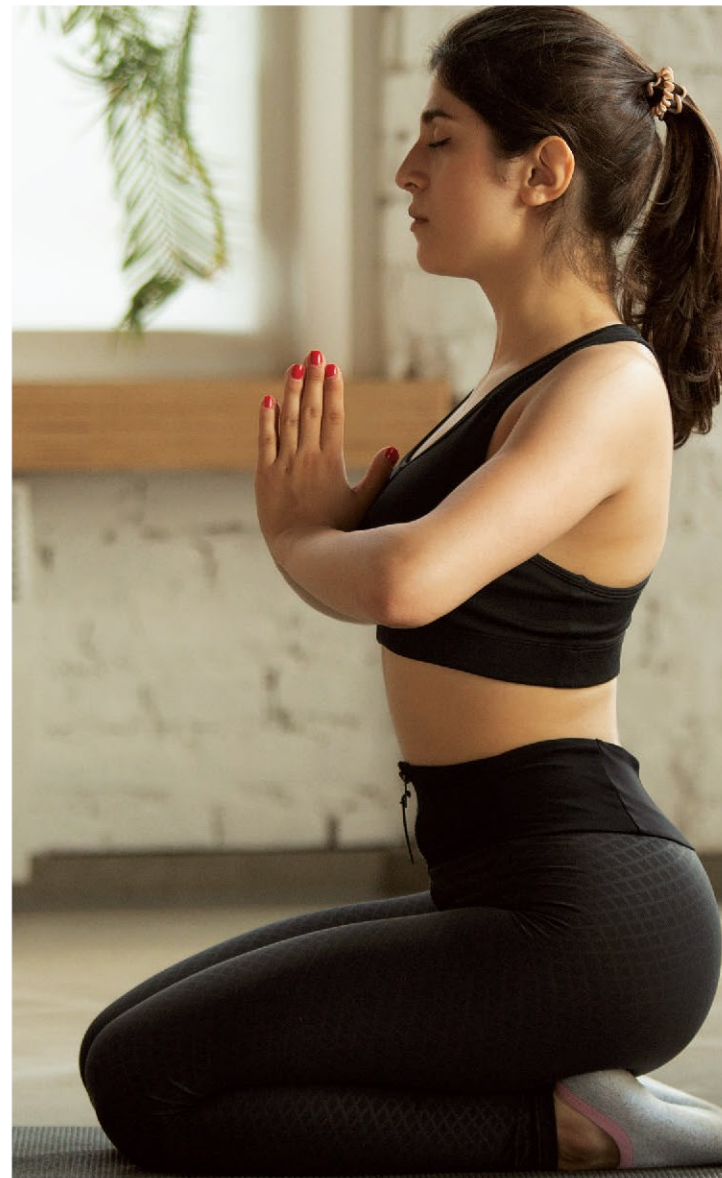


UNPARALLELED & ELEVATED SENSE OF LUXURY

Taking the level of luxury living to an elevated scale, Panorama offers the unique 'Skypool'. This temperature-controlled rooftop swimming pool allows you to calmly sink into the bathing pleasure where the sky and the mesmerizing mountain view are your only companions.

The Skypool offers an unparalleled sense of contentment to the Panorama residents that others can only imagine!





FITNESS,
WELLNESS,
FUN & FROLIC,
LUNG-SPACE...
IT'S ALL THERE
FOR YOU

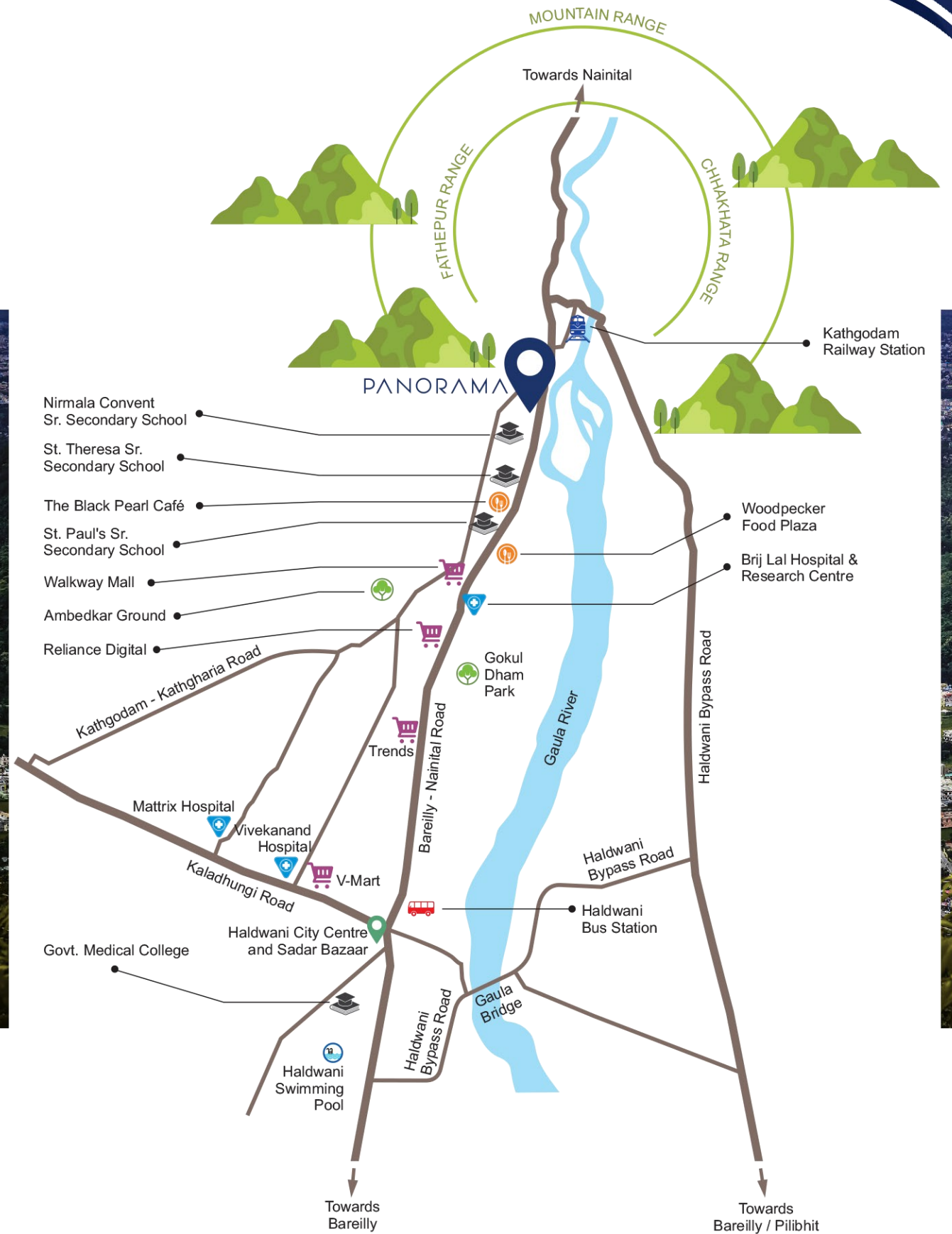
Amenities at Panorama:

- Gymnasium
- Yoga zone
- Health spa
- Outdoor spaces for senior citizens

- Lush green landscaping
- Evergreen trees in periphery
- Clean & green ambience

IN THE RIGHT LOCALE

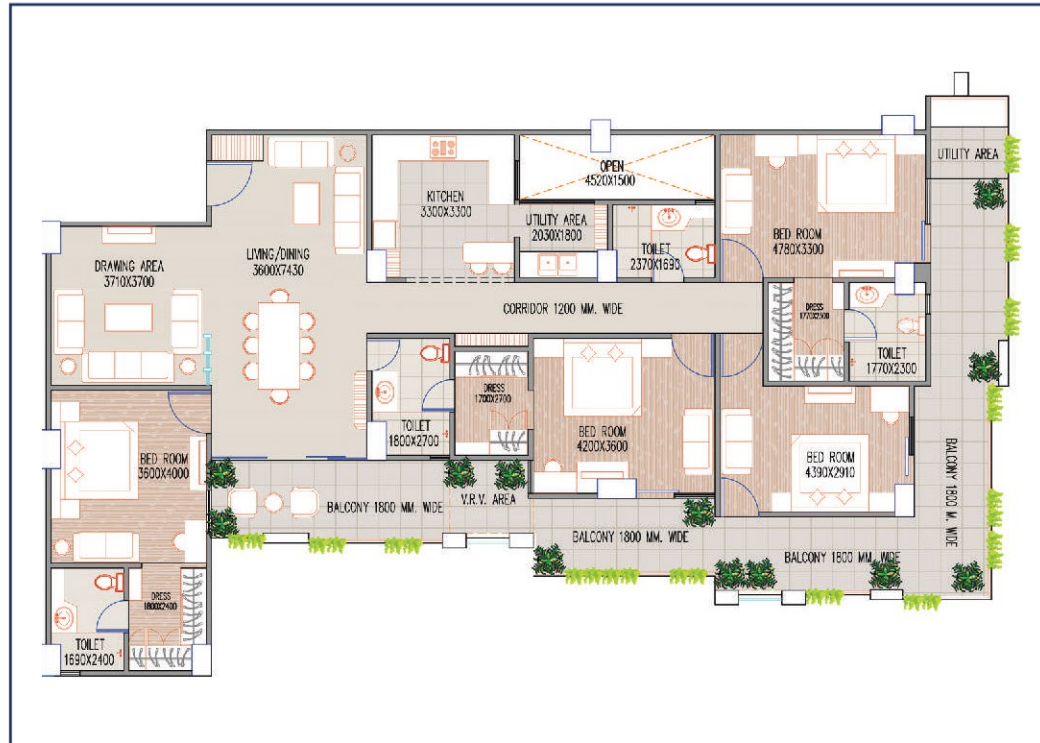
The quality of your neighbourhood is as important as the quality of your home. Strategically located amidst well-developed Haldwani neighbourhood, Panorama has major educational institutions, healthcare centres, prime retail facilities, eateries and Kathgodam Railway Station in close proximity.



MAP SHOWN IS NOT TO SCALE

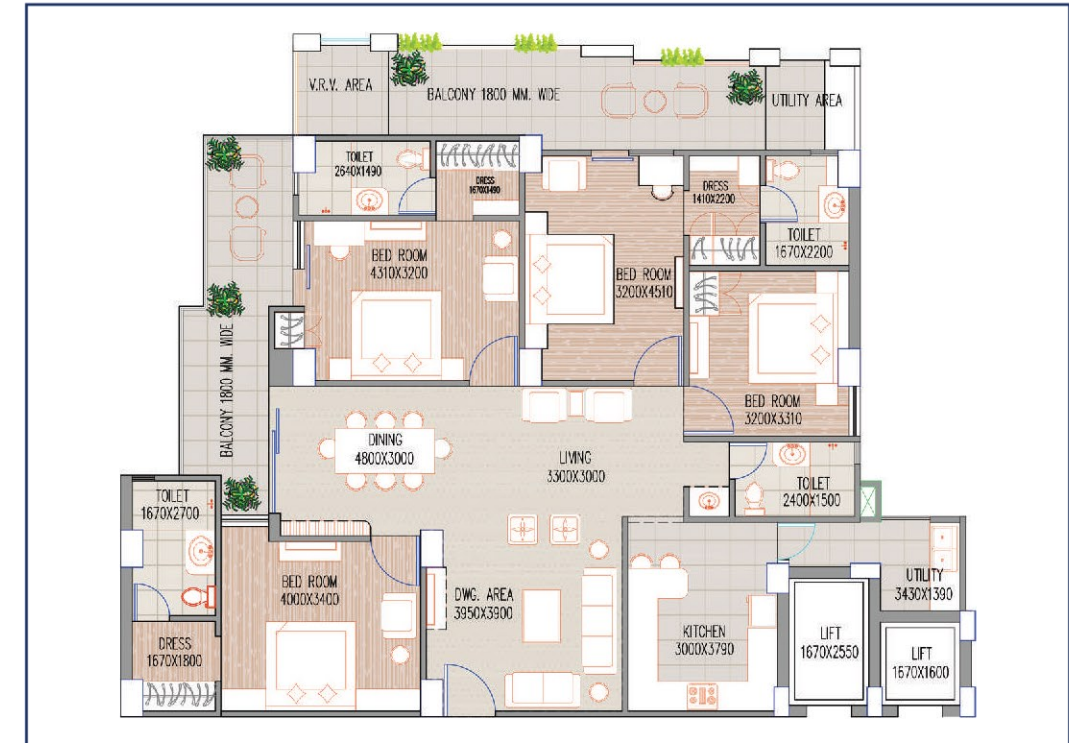
FLOOR PLANS

Typical 4 BHK Type 01
Carpet Area: 153.22 SQM | Super Area: 240.76 SQM



FLOOR PLANS

Typical 4 BHK Type 02
Carpet Area: 130.24 SQM | Super Area: 203.18 SQM



FLOOR PLANS

Typical 3 BHK Type 01
Carpet Area: 135.59 SQM | Super Area: 200.73 SQM



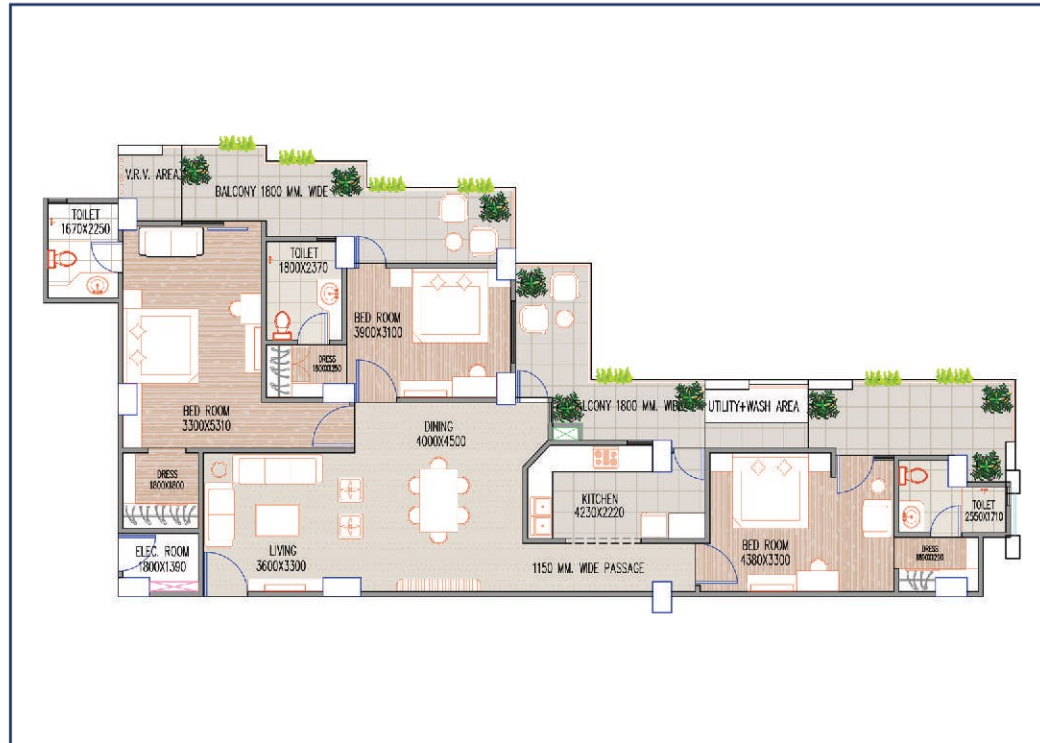
FLOOR PLANS

Typical 3 BHK Type 02
Carpet Area: 135.25 SQM | Super Area: 197.29 SQM



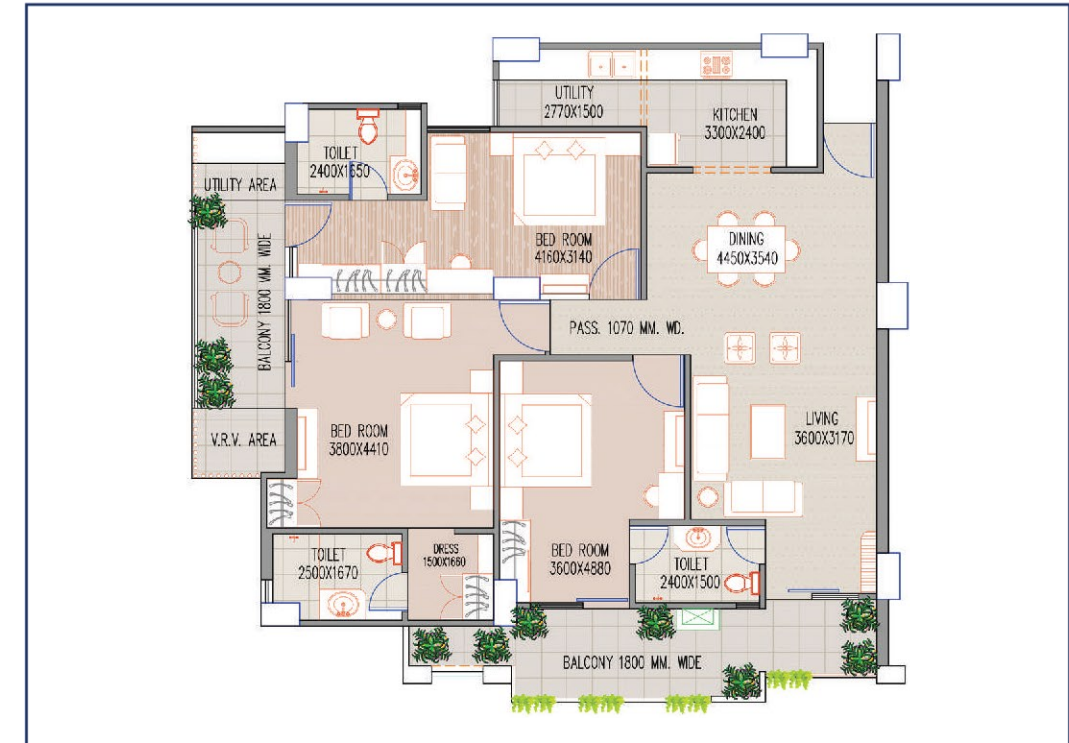
FLOOR PLANS

Typical 3 BHK Type 03
Carpet Area: 109.03 SQM | Super Area: 184.95 SQM



FLOOR PLANS

Typical 3 BHK Type 04
Carpet Area: 109.72 SQM | Super Area: 175.75 SQM



FLOOR PLANS

Typical 3 BHK Type 05
 Carpet Area: 100.64 SQM | Super Area: 155.96 SQM



Typical Floor Arrangement



ROOM FOR ALL, LIVE TO THE FULLEST

At Panorama the approach is focused on creating living spaces that are inclusive, accessible, and tailored to meet the diverse lifestyles, needs, and preferences of its residents. Whether it's a family with children and elderly members, or a couple in their golden years, here it's ensured that everyone should have access to safe, comfortable, and functional living spaces that enable them to live life to the fullest. By not only designing homes, but also fostering welcoming and inclusive communities, Panorama creates room for all and ensures that every resident has the opportunity to thrive in the place they call home.





Artist's impression



PANORAMA

RERA Registered: UKREP03230000490

www.panoramahomes.in

A Project Of:

KR | **INFRA**
HEIGHTS

Site Address:

Panorama
Near ITBP Transit Camp
Nainital Road
Haldwani
Uttarakhand - 263139

Corporate Office:

K R Tower
Seesh Mahal
Near St. Theresa School
Nainital Road, Haldwani
Uttarakhand - 263139

 9091 001 009  info@panoramahomes.in

This brochure is purely conceptual. The information and visuals contained herein are artistic impressions and are meant to be indicative and are subject to change as may be required by the authorities, architects and cannot form an offer or contract. The promoters reserve their rights to make alterations, additions and amendments as may be necessitated from time to time. Specifications and materials mentioned here are subject to availability.